

Notley High School & Braintree Sixth Form's Magazine

# on campus

Issue 9  
Feb 2015



# In the House!

New system finalised

Lee Valley VeloPark

Jack Petchey Presentation

Book Review Competition

Year 10 University Trip

Maths Leaders Award Trip

Photography Workshop

....and much more



# WE NEED YOU!

## Volunteering Opportunity

Apply early to secure your first library choice



### Are you aged 14 and over?

We need **volunteers** to help children take part in the **Summer Reading Challenge** in libraries during the summer holidays

### Interested?

Ask the librarian or work experience co-ordinator at your school/college for an application form or visit

[www.essex.gov.uk/libraries](http://www.essex.gov.uk/libraries)

Closing date: Friday 5 June

# contents

Headlines ..... 3

**New House System 4**

**Lee Valley VeloPark.....6**

**Jack Petchey Awards .....8**

**Year 10 University Trip ..... 12**

**Maths Leader Award Trip.....13**

**Charity News..... 14**

Thank You..... 16

Extra-curricular Clubs..... 18

Book Review ..... 20

Head Boy and Head Girl Report ..... 21

**Book Review Competition ..21**

Notice Board ..... 22

Term Dates 2014/15 ..... 23

Parent View ..... 24

Social Media ..... 24

Website..... 25

**Photography Workshop .....26**

Sixth Form News ..... 30

Braintree Arts Theatre ..... 36



Except where individually credited, all photography is by Notley staff photographers: Chris Rowe, Larane Sullivan and Catherine Reeves

advertisement

# braintreeartstheatre

## Spring - Summer 2015



[twitter.com/BATheatre](https://twitter.com/BATheatre)  
[facebook.com/braintreeartstheatre](https://facebook.com/braintreeartstheatre)

[www.braintreeartstheatre.com](http://www.braintreeartstheatre.com)  
Box Office: 01376 556 354

# headlines

Welcome to this edition of OnCampus

During the Autumn term, we held a competition for students and staff to suggest names for the school's three houses for students in Years 7 – 11. As a result of the student and staff vote, I am delighted to announce that the winning house names are Blackwater (NOT), Chelmer (LEY) and Colne (HSB).

Students have had the opportunity to experience a variety of day visits again this half term, including a Year 10 trip on 13 January 2015 for a group of students to experience a day at the University of Essex in Colchester and a Year 8 Maths Leaders Award trip held on 19 January 2015 at the Anglia Ruskin University in Chelmsford. Braintree Sixth Form students enjoyed an engaging and motivational study skills workshop on 13 January 2015 in Braintree Arts Theatre, presented by Adebajji Alade, a portrait artist, details of which can be read on page 31. Two residential trips abroad will be held during the February half term; the annual ski trip to Flachau, Austria which students in Years 7 – 12 from both Notley High School & Braintree Sixth Form and The Ramsey Academy, Halstead will experience and a PE football development tour to Barcelona for students in Years 7 - 11.

I am very proud of the variety of extra-curricular clubs in which our students are able to participate. Clubs run on a Wednesday after school, from 3.15pm – 4.20pm, with a late bus running at 4.30pm. Please see pages 18 and 19 for details of the clubs being held during the Spring term.

The school continued its commitment to fundraising again last term. I am very proud to inform you that £1,280.72 was raised on 14 November 2014 for Children in Need and £660 was raised on 12 December 2014 as a result of our Christmas Jumper Day for Save the Children.

Braintree Arts Theatre hosted the Jack Petchey Award Annual Regional Schools' Presentation Evening on 27 January 2015. Young people from across the district were recognised for their hard work, determination and achievement over the past year and this included many of our students that received their well-deserved awards. Please read pages 8 – 11 for further details. Congratulations to Mr Burge, Duke of Edinburgh Co-ordinator, who was nominated for a Jack Petchey Award by students and staff to for his commitment to the Duke of Edinburgh Award Scheme. The school offers the Duke of Edinburgh programme to students via three progress levels which, if successfully completed, lead to a Bronze,



*Simon Thompson, Headteacher*

Silver or Gold Duke of Edinburgh Award. The evening ended with an excellent performance by some of the cast of the school's production of Grease, which takes place on 5 and 6 February 2015, a review of which will be included in the next edition of OnCampus.

With my best wishes for the rest of the Spring term

Mr S Thompson  
Headteacher

# newhousesystem

During the Autumn term, we held a competition for students and staff to suggest names for Notley's 3 houses. Students are placed in one of three houses, depending on which tutor groups they are in with tutor groups in NOT, LEY and HSB making up the 3 houses.

Mr Newman and Mrs Townsend met with the senior prefects to agree which names should reach the

short-list of 6 options from the competition, in order for there to be a school vote for both students and staff this half term. Mr Newman and the senior prefects visited all Years 7 - 11 assemblies to give students information about the 6 options on the short-list in advance of the vote.

The voting paper is shown below with the shortlisted options:-

## HOUSE NAMES - Vote to take place during morning registration on either Tuesday 20 January 2015 or Wednesday 21 January 2015

Please vote by putting **ONE CROSS (X)** against **ONE** of your choices, thank you

NOT	LEY	HSB	Reasons	Vote
Bawden	Challis	Ray	These are the names of three people who were born in Braintree and who went on to achieve notable success in their different fields. Edward Bawden, who was born in Braintree in 1903, was a painter, artist and illustrator. He was a member of the Royal Academy. James Challis was born in Braintree in 1803 and was an astronomer and clergyman. He was a fellow of Trinity College, Cambridge. John Ray was born in 1627. He was an internationally important botanist, who is sometimes described as the 'father of natural history'.	
Blackwater	Chelmer	Colne	These are all the names of Essex rivers and would link each house with our regional geography. The Blackwater runs east and south from Bocking, emptying into the Blackwater estuary. The Chelmer runs entirely through Essex, before merging with the Blackwater at Maldon. The Colne is a river which is not a tributary to any other river, but flows through Colchester before reaching the sea at Brightlingsea.	
Crittall	Courtauld	Warner	These are names of three companies which have been important in Braintree's history. Each of these names refers to local people who provided employment for many and also gave generously to the town. Crittall Windows goes back to an ironmonger in the mid 19th century, and the company has supplied windows to the Houses of Parliament and RMS Titanic. The local football team originated in the company - hence their nickname 'the iron'. Courtauld is the name of a major textiles company from Braintree, which was also pioneering in its treatment of its workers. Warner is the name of another major textiles company, which was known for making silks and velvets, including coronation robes for royalty.	
Gardner (Headteacher 1971-1981)	Smart (Teacher 1997-2003)	Adams (Teacher 2003-2011)	These are the names of three educationalists who have been associated with Notley High School over the years. Dorothy Gardner was the first Headteacher of the school. She continues to support the school and its students through awards at presentation evenings. Janet Smart was an English teacher who is commemorated in the Janet Smart garden at the school. Gaynor Adams was also a teacher, who is commemorated through the award for Key Stage 3 achievement in modern foreign languages each year.	
Ray	Darwin	Curie	These are the names of three internationally celebrated scientists, whose work had a transformational impact. John Ray was born in Black Notley and was an internationally important botanist, who is sometimes described as the 'father of natural history'. Charles Darwin was a naturalist and a geologist, who is best known for his contribution to the theory of evolution. Marie Curie was a physicist and chemist who is remembered for her work on radioactivity and the discovery of two elements, polonium and radium. She was the first woman to be awarded a Nobel prize.	
Gardner (Headteacher 1971-1981)	Bawden	Ray	These are the names of people who have local connections in different fields. Dorothy Gardner was the first Headteacher of the school. She continues to support the school and its students through awards at presentation evenings. Edward Bawden, who was born in Braintree in 1903, was a painter, artist and illustrator. He was a member of the Royal Academy. John Ray was born in Black Notley and was an internationally important botanist, who is sometimes described as the 'father of natural history'.	

As a result of 1048 student votes and 81 staff votes, the winning house names are Blackwater (NOT), Chelmer (LEY) and Colne (HSB).





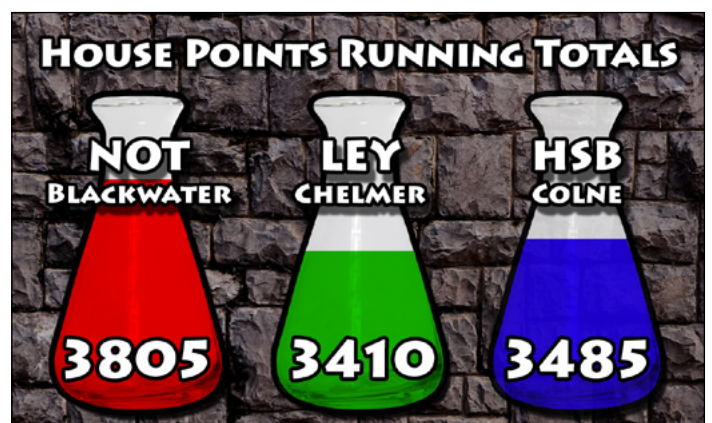
counting the votes

Notley's house competition runs across the academic years 7 - 11, and gives students in different year groups the opportunity to compete together in a range of activities, events and achievements to determine the winners of the house competition. House points can be achieved via:-

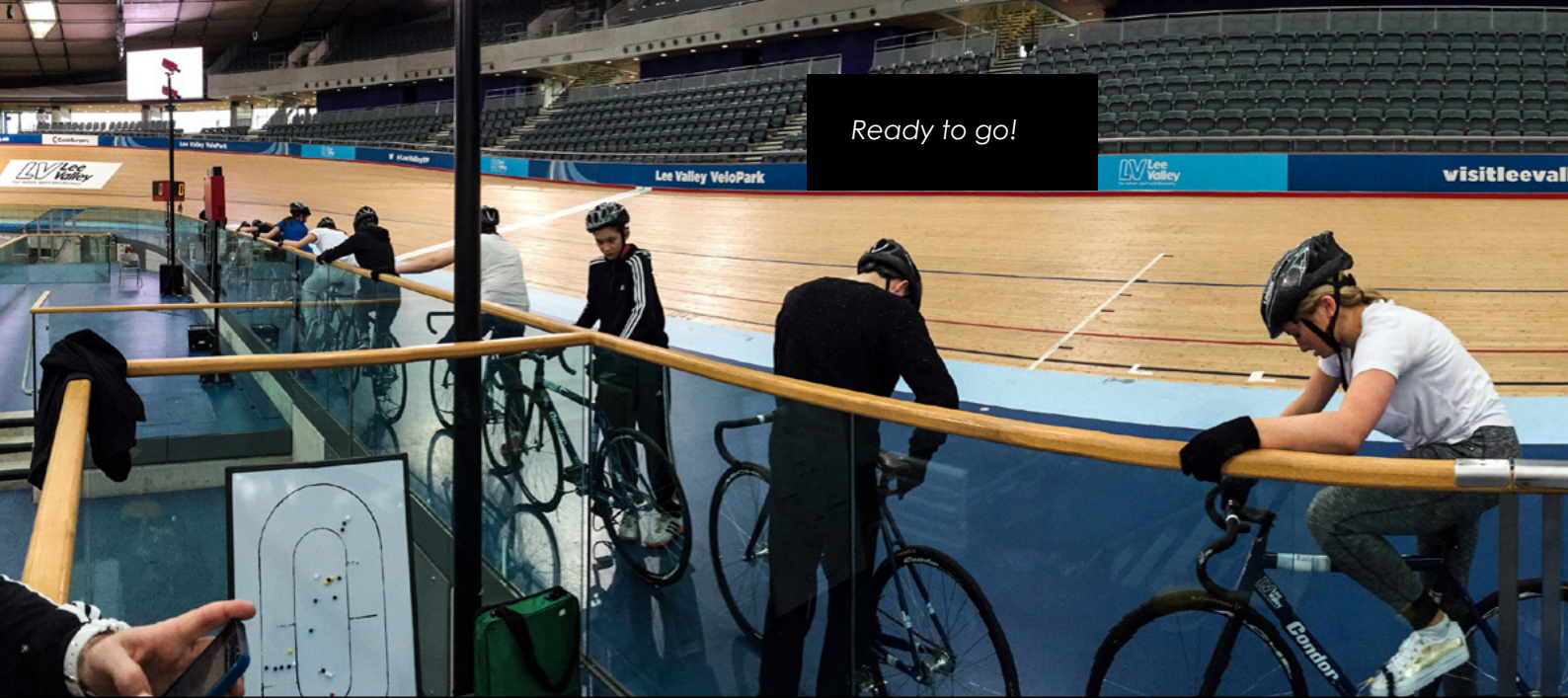
- Merits and commendations
- Attendance
- Impact Days
- Curriculum competitions – including Modern Foreign Languages and English competitions so far this year
- PE inter-form activities
- Sports Day

We plan to add a growing number of activities, events and achievements to the competition as it becomes more established. There will also be student leadership opportunities from all year groups.

The points totals to date this year are:-



The running points totals for each house can be seen on the home page of the school website. The outcomes of the house competition will be announced in final assemblies at the end of the Summer term.



Ready to go!

# leevalleyvelopark



To continue in the footsteps of the London 2012 Olympics, 15 Year 10 GCSE PE students attended the Velopark on Monday 26 January 2015.



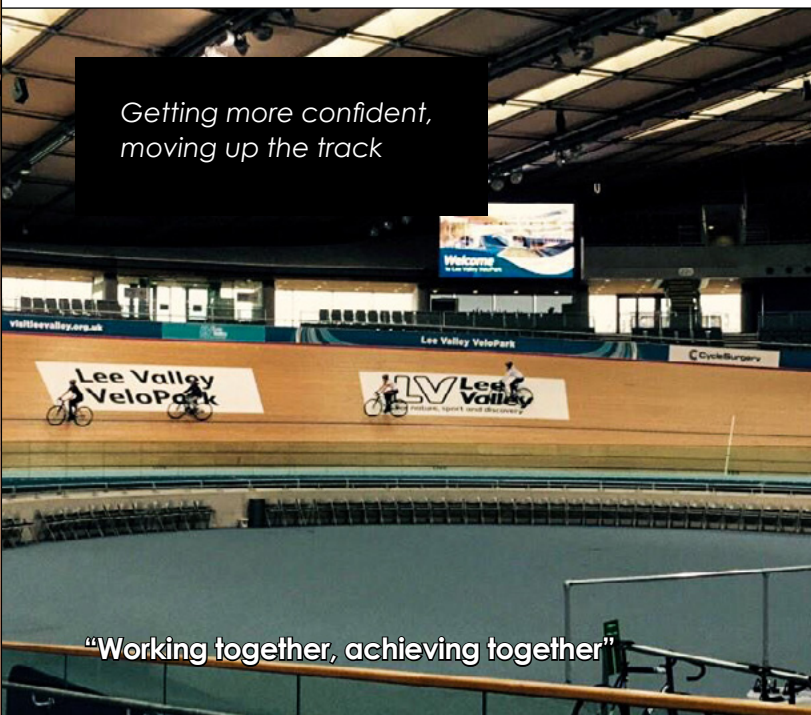
Two and half years ago the venue was host to gold medal champions such as Sir Chris Hoy and Bradley Wiggins, but on Monday 26 January 2015, Notley High School & Braintree Sixth Form students were looking very nervous.

On walking out into the middle of the Velopark, the first thing you notice is how steep the track is. The students were very nervous before starting, however they soon picked up the skills that they needed. The coach that was working with us taught them how to push off to start and also how to control the stopping, not an easy task when there are no brakes! All students learnt very quickly and were soon flying around the track. By the end of the session, all of the students were racing around the top of the track at high speed.

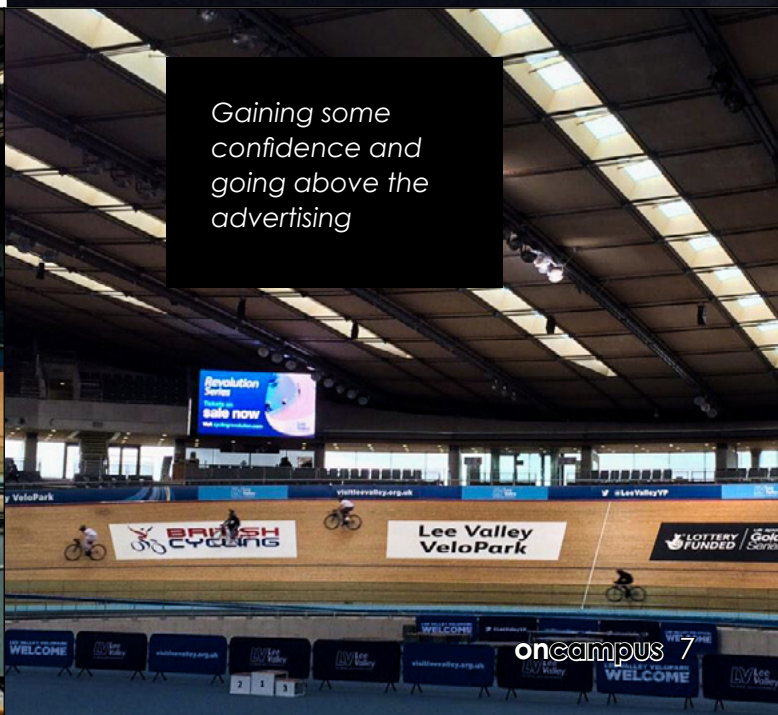
The students were a pleasure to take on the trip and I think all of them now have a new passion for cycling.

*Mr Cunningham, Faculty Leader - PE*

*Always nice to see a Year 11 student on the big screen, Shane Redgewell*



*Getting more confident, moving up the track*



*Gaining some confidence and going above the advertising*

*"Working together, achieving together"*

# jackpetcheyawards

## Jack Petchey Presentation Evening



### If you think you can, you can!

It was a real pleasure to attend another Jack Petchey Presentation Evening on Tuesday 27 January 2015, in Braintree Arts Theatre, where we clapped and cheered for each of the young people from the schools in the Braintree district who have received an award for their hard work, determination and achievement over the last year.

Councillor Sue Wilson, Chairman of the Council opened the evening with a lovely encouraging speech and the awards were presented by the Police Commissioner and Brooks Newmark, the local MP, with the help of Nikki Casey the grants award officer for our area.



Each student collected their medallion and smiled for the photographer as we clapped along in time to the music and their achievement was shared with the audience.

Particularly noteworthy were Kaitlin Clifton-Ward who shaved her hair off for charity, which she then donated to be made into a children's wig.



*(Above) Joshua Nicoll received his award for starting his own business and making it work.*

*(Right) Lucas Smith received his award for working particularly hard to catch up with work missed due to illness which kept him off school for some time*



It was brilliant to see some of our students collect their medallions and receive the final accolade for their achievement in front of a large crowd and in particular to see Mr Burge collect the Leader's Award.

Mr Burge was nominated by students and staff to receive the award for his tireless commitment to the Duke of Edinburgh Award scheme which takes a huge amount of preparation behind the scenes, as well as a lot of personal time supervising expeditions and ensuring as many students who want to take part are able to.

We are very proud to be able to offer the Duke of Edinburgh Award to so many students at the school and this is only possible with the hard work of several staff working together and especially Mr Burge who brings it together and makes it run smoothly.

## The Vision

Our vision is of a world where young people have high aspirations; the opportunity to develop their potential; the chance to be architects of their own future; to play a full part in society and to be valued and recognised for the positive things they achieve.



## The Mission:

To enable young people (aged 11 – 25 years in London, Essex & the Algarve area of Portugal), to achieve their potential by inspiring, investing in, developing and promoting activities that increase their personal, social, emotional and physical development.

# JackPetchey Foundation

Inspire • Motivate • Achieve



*Henry Fitch-Bartlett received his award for helping to run a drama club and enable younger students to put on a performance*

The evening was finished off with a most excellent performance by some of the Grease cast, who performed 'Freddie my love' (thank you Megan Amos, Lily James, Natacha Maurin, Noreen Mukahiwa and Evie Stoneman).

Well done again to all of our students who have been awarded the Jack Petchey Award this year! Remember;

If you think you can, you can!

Mrs Wallace, Rewards and Awards Co-ordinator

10 oncampus



*James Meade won his award for his continuing effort with helping to run a cubs group*



*The Jack Petchey Foundation was established in 1999 to support organisations that work with young people aged 11-25. Since its formation over £85 million has been distributed.*

*"Working together, achieving together"*



Photos: courtesy of the Jack Petche website

“Working together, achieving together”

# year 10 university trip



“It was an educational trip to show me the university life and what I have got to look forward to”  
*Lydia Butler, 10H*



## A taste of university life

On Tuesday 13 January 2015, 39 Year 10 students visited the University of Essex to have a taster session of university life. Students were introduced to the different pathways into university, as well as different opportunities they could have access to. Students had a tour of the university and got to see what the living accommodation was like and were also introduced to the different courses on offer.

*Mrs Sutton, Year Leader - Year 10*



# mathsleaderawardtrip



## Notley city slickers

On Monday 19 January 2015, the 14 students from the Maths Leader Group went on a day trip to the Anglia Ruskin University in Chelmsford.

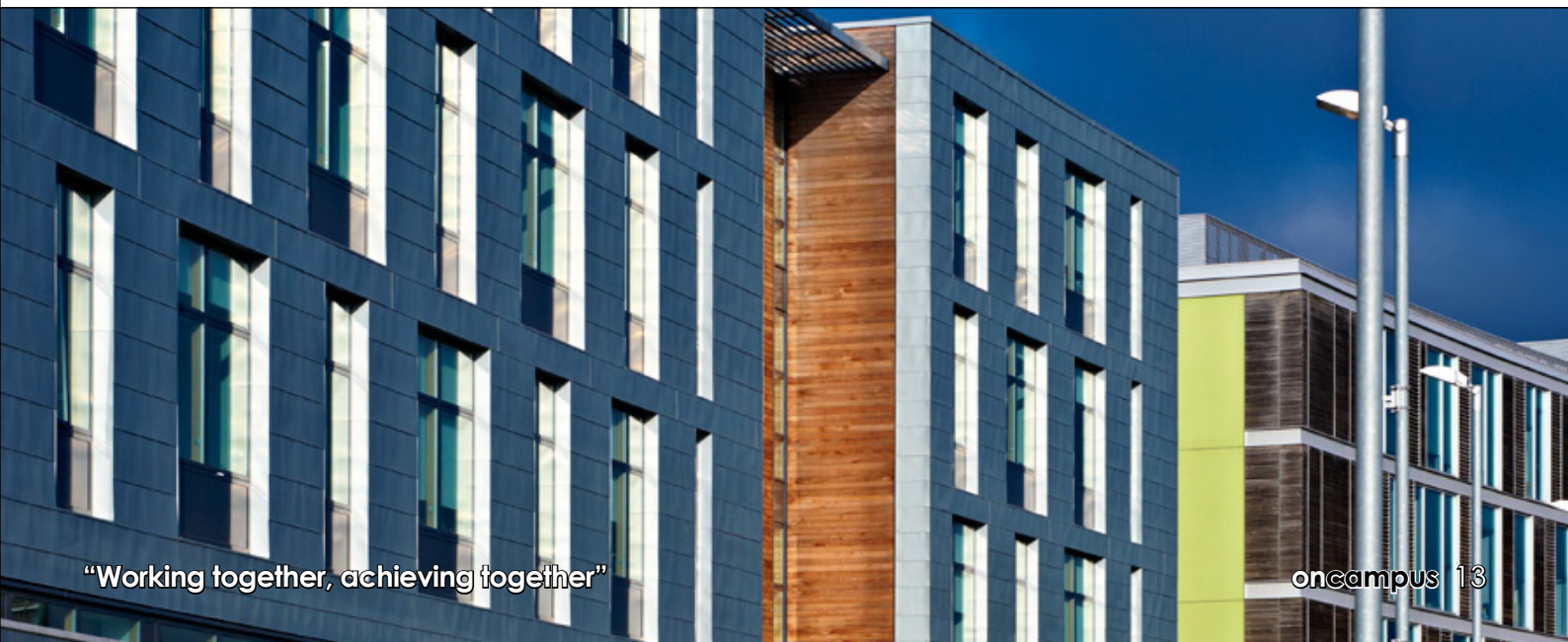
During the day, Tony Stringer, a business lecturer, helped us to look at different companies on the computer using software called Bloomberg; Bloomberg gives you up-to-date information on shares, profits, investments etc.

Divided into pairs, we had a budget of \$100,000. Using this budget, we had to select and invest in one

or more companies. We had to look at how much money it would cost per share and how many shares we would want. It was a great learning experience and we all enjoyed it.

We would like to say thank you to Mrs Forster for her hard work and in particular, to Mrs Dennis for organising the trip and for passing her minibuss driving test to take us there!

*Ben Truman 8Y*



# charitynews



On Friday 14 November 2014, the students and staff at Notley High School & Braintree Sixth Form came together to raise money for Children in Need.

The students came to school in non uniform, whilst the staff 'dressed down', all in the name of raising money for an extremely worthy cause. We also organised a bake sale. Both staff and students brought in a variety of cakes and cookies to be sold in aid of the fundraising. At break time, they flocked in their masses towards the stall, to tantalise those taste buds, and give generously in return for some really

scrumptious treats.

It was overwhelming to see everyone come together, work together, and raise money together to help Children in Need. The atmosphere was electric throughout the school, and really highlighted the sheer warmth that makes us a community. The grand total came to a whopping £1,280.72! A great result for an extremely successful day of fundraising.





On 12 December 2014, we held our very own Christmas Jumper Day in aid of Save the Children's national campaign, to raise money and awareness of the poverty and devastation so many young people face around the world. The bonus was that the UK government had pledged to match every pound raised. With this in mind, Dexan Charlery-Warner and Megan Amos, organised and delivered brilliant assemblies all week to get the students and staff motivated and aware of why we were fundraising.



They helped organise and run the bake sale. We also had Mr De Gea and Miss Rabhi in the stocks in the freezing cold having wet sponges thrown at them – all in the name of charity.



We managed to raise £660 which was brilliant. A massive thank you to all the staff, students and parents/carers that supported our fundraising endeavours last term.

Mrs Khatun, Charities Co-ordinator

“Working together, achieving together”

# thankyou



2014 was a tough year for Olivia Coughlan and her family and friends, and I am so relieved to now know that Olivia is officially in remission. During the past 12 months, my friends and I wanted to make the best of the situation and do something positive, hence we ran the Race for Life and hosted a charity quiz night. Without the support of Notley High School & Braintree Sixth Form, the staff and students, we wouldn't have been able to raise the astounding £4,710.00 which we did, for Cancer Research UK and the Teenage Cancer Trust, so a big THANK YOU from all of us and a happy and healthy 2015.

Teenage Cancer Trust are incredibly grateful for their donation. Follow the link for further details.

<https://teenagecancertrust.org/support-us/where-i-live/notley-high-school-and-braintree-sixth-form>

Lauren Fisher 11H



Actually now an amazing £4710!



Olivia and Pixie Lott. Yes, THE Pixie Lott!





# PARENTS/CARERS

# HELPLINE

**01376 332193**

**Wednesday 9.30 am – 11 am - School term time only**

**Jan Preston**

**Home School Family Worker will be available to answer your call to support you and offer advice**

**Lunchtime Drop-in Session with Jan Preston and School Nurse Cheryl Gerrard**

**Wednesday lunchtimes in G23**

# extra-curricular clubs

Clubs running on a WEDNESDAY after school will run from 3.15pm- 4.20pm. Late buses will be provided leaving at 4.30pm. Please see school website for bus routes.

Club	Venue	Member of Staff	Children's University
Computing	IT4	Mrs Pillai	✓
Science Club	G26	Mr Vosper	
Chinese Club	F2	Mrs Harries	
Homework Club	G29	Mrs Haight	✓
Grease Drama Production	Drama Studio	Drama Department	
Entry Level French	F2	Mrs Coxon	
KS3 and KS4 Maths Support	G44	Miss Whitmore	
Art GCSE catch up Years 10 and 11	G11	Miss King	
GCSE Product Design	G4	Mrs Smith	

Clubs running on other days:-

Club	Day/Time	Venue	Member of Staff	Children's University
Art Club Year 7	Monday Lunchtime	G11	Miss King	
Computer Club Nintendo, Wii Sport/Fit & Games, homework	Tuesday - Thursday 3.15pm – 5pm	G29	Mrs Lewsey	✓
Art Club Year 8	Tuesday	G11	Miss King	
Art Club Years 10 and 11	Monday- Thursday Lunchtime	G11	Miss King	
Homework Club	Every Lunchtime	G35		✓
Maths and Rubik's Cube	Every Lunchtime	G46 & G49	Maths Department	
Art Club Year 9	Wednesday Lunchtime	G11	Miss King	
Reading Club	Monday Lunchtime	Library	Miss White	✓
DofE Drop In	Thursday Lunchtime	G6	Mr Burge	
Entry Level Spanish	Thursday 3.15pm – 4.15pm	F10	Mr De Gea	
Card Making	Thursday 3.15pm – 4.15pm	G34	Mrs Park	
Year 9 Dance Performance	Thursday 3.15pm – 4.15pm	Dance studio	Miss Auston	
Christian Union	Friday Lunchtime	F7	Mrs Fouche	

## Music Department

Day	Activity	Venue	Member of Staff
Monday	Senior Choir - Years 9 – 13	G2	Mrs Hanna
Tuesday	Wind Band	G2	Mrs Hanna
Wednesday	African Drummers	G2	Mr Timms
	Flute Group	M2	Mrs Robb
	Junior Choir	G3	Miss Freeman
Thursday	Jazz Band	G2	Mrs Robb
	Keyboard Club - Years 7 and 8	G1	Mr Harris
	Year 11 GCSE Music	G2	Mrs Hanna
Friday	Ukulele Club	G3	Mr Harris
	Music Technology Club - Years 7 and 8	G1	Mrs Robb

All rehearsals start at 1.40pm. New members are always welcome. Please see members of staff for more details.

## PE Clubs

Monday Lunchtime	Tuesday Lunchtime	Wednesday Lunchtime	Thursday Lunchtime	Friday Lunchtime
<b>Kick Rounders</b> Years 7 and 8 – Fitness Centre Mr Cunningham/Mr Ewing  <b>Gymnastics</b> Year 7 – Gym Miss Murdoch/Miss Shephard  <b>Interform</b> Sports Hall Mr Reeve/Mr Lowes	<b>Girls Handball</b> All Years – Sports Hall Mrs Gunn  <b>Trampoline</b> Years 8 - 11 – Gym Mr Cunningham/Mr Ewing	<b>Indoor Cricket</b> All Years – Gym Mr Reeve  <b>SLC Club</b> Fitness Centre Mr Ewing	<b>Trampoline</b> Year 7 – Gym Mrs Segura  <b>Badminton</b> All Years – Sports Hall Mr Ewing/Mr Lowes  <b>Handball/Tchoukball</b> All Years – Fitness Centre Mr Cunningham/Mr Reeve	<b>Football</b> Year 11 – Sports Hall Mr Cunningham/Mr Ewing  <b>Table Tennis</b> All Years – Sports Hall Mr Reeve/Mr Lowes  <b>GCSE Theory Catch Up</b> G17 Mr Cunningham/ Miss Shephard
After School	After School	After School	After School	After School
<b>Rugby</b> Year 7 – Field Mr Reeve  <b>Futsal</b> Years 8 and 9 – Fitness Centre Mr Cunningham/Mr Ewing  <b>Netball</b> Year 7 – Courts Miss Murdoch  <b>Badminton</b> Sports Hall – Mrs Cureton	Staff meetings	<b>Sixth Form Netball</b> Netball Courts Miss Shephard  <b>Futsal</b> Year 7 – Fitness Centre Mr Ewing/Mr Reeve  <b>Sixth Form Football</b> Mr Cunningham/Mr Lowes  <b>Cheerleading</b> Gym Mrs Segura  <b>Football</b> Year 11 - Field Mr Hudgell  <b>Badminton</b> Sports Hall Mrs Cureton	<b>Girls Football</b> All Years – Sports Hall Miss Shephard/Mr Reeve  <b>Futsal</b> Year 10 – Fitness Centre Mr Lowes  <b>BTEC Catch Up</b> ICT 2 Mr Ewing	No clubs

# I FUNNY

A MIDDLE SCHOOL STORY



## bookreport

I have just finished reading 'I Funny' and I think it is a great book. In my opinion, it is such a good book because it teaches the reader that anyone with a disability can achieve their life dream. The boy in this book is disabled and his dream is to be a comedian. He goes to lots of competitions

and is set back on many occasions. However, he keeps trying and eventually, he does achieve his dream and he becomes a superb comedian. I would strongly recommend that you read this as it's the best book I've read in a very long time.

*Shaun Hardy 9S*

# JAMES PATTERSON

# head**boy**head**girl**report



Adam Grimwood and Scarlett Perrin  
Head Boy and Head Girl

After a long term, the Christmas holidays came as a welcome break.

This term so far has been busy for all year groups. Year 11 students have been doing their ISAs and getting ready for their GCSE exams.

Students throughout all years have been working hard on the school production of Grease and we are looking forward to seeing it; I'm sure all their hard work will pay off.

The new house names were voted for by staff and students; these were counted and as a result, the house names are Blackwater (NOT), Chelmer (LEY) and Colne (HSB).

It has been a good term so far, and we look forward to seeing what the rest of the term holds for us.

# book**review**competition

## Write a Book Review ...



## ... Win a Prize!

The library will be running a book review competition between now and World Book Day, which is on 5 March 2015.

All years are welcome to take part. Students can collect an entry form from the library, write their review in 200 words or less and hand their entry back to the library. Reviews will be on display in the library on World Book Day and the top reviews will also be published in the library catalogue. A winner will be chosen, and receive a £10 book voucher.

For more information please see the school website.

# noticeboard



## Diary Dates

Here are a few diary items to note. For a full list of diary events please visit the online campus calendar at

<http://www.notleyhigh.com/school-calendar>

### Tuesday 10 February

Safer Internet Day

### Wednesday 11 February

Children's University Awards Ceremony 6.30pm – 7.30pm

### Thursday 12 February

MFL Spelling Bee Competition 2.10pm – 3.15pm

Year 12 Parents'/Carers' Consultation Evening  
5pm – 8pm

### Friday 13 February

Deadline for return of KS4 options choices

Ski Trip for Years 7 - 12 students

### 16 – 20 February

Half Term

### Monday 23 February

WEEK B

Staff Training Day (No Students)

### Thursday 26 February

Years 7 & 11 Tutor Group Photographs and Year  
11 Whole Year Group Photograph

## Uniform Wanted

Do you have any uniform that no longer fits, or you no longer need?

We are in need of any items you would be able to donate, especially trousers, skirts and ties.

Thank you.

*Mrs Hunter, Student Services*

## Student Absence/ Late Lines

Year 7 01376 556347

Year 8 01376 556348

Year 9 01376 556349

Year 10 01376 556350

Year 11 01376 556351

**The absence lines should be called on a daily basis to report your child late or sick.**

## Contact the Magazine

We are always happy to receive articles from parents/carers and students. If you have a piece of news you would like to be included in the magazine, you can email it directly to the editor at:

**[lisa.perkins@notleyhigh.com](mailto:lisa.perkins@notleyhigh.com)**

The deadline for submission is the Thursday prior to publication.

# term dates



## Notley High School & Braintree Sixth Form School Term and Holiday Dates Academic Year 2014-2015

September 2014							October 2014							November 2014							December 2014						
M	T	W	T	F	S	S	M	T	W	T	F	S	S	M	T	W	T	F	S	S	M	T	W	T	F	S	S
1	2	3	4	5	6	7	6	7	8	9	10	11	12	3	4	5	6	7	8	9	1	2	3	4	5	6	7
8	9	10	11	12	13	14	13	14	15	16	17	18	19	10	11	12	13	14	15	16	8	9	10	11	12	13	14
15	16	17	18	19	20	21	20	21	22	23	24	25	26	17	18	19	20	21	22	23	15	16	17	18	19	20	21
22	23	24	25	26	27	28	27	28	29	30	31	24	25	26	27	28	29	30	22	23	24	25	26	27	28		
29	30																		29	30	31						
January 2015							February 2015							March 2015							April 2015						
M	T	W	T	F	S	S	M	T	W	T	F	S	S	M	T	W	T	F	S	S	M	T	W	T	F	S	S
			1	2	3	4							1							1				1	2	3	4
5	6	7	8	9	10	11	2	3	4	5	6	7	8	2	3	4	5	6	7	8	6	7	8	9	10	11	12
12	13	14	15	16	17	18	9	10	11	12	13	14	15	9	10	11	12	13	14	15	13	14	15	16	17	18	19
19	20	21	22	23	24	25	16	17	18	19	20	21	22	16	17	18	19	20	21	22	20	21	22	23	24	25	26
26	27	28	29	30	31	23	24	25	26	27	28	23	24	25	26	27	28	29	27	28	29	30					
													30	31													
May 2015							June 2015							July 2015							August/ September 2015						
M	T	W	T	F	S	S	M	T	W	T	F	S	S	M	T	W	T	F	S	S	M	T	W	T	F	S	S
				1	2	3	1	2	3	4	5	6	7			1	2	3	4	5						1	2
4	5	6	7	8	9	10	8	9	10	11	12	13	14	6	7	8	9	10	11	12	3	4	5	6	7	8	9
11	12	13	14	15	16	17	15	16	17	18	19	20	21	13	14	15	16	17	18	19	10	11	12	13	14	15	16
18	19	20	21	22	23	24	22	23	24	25	26	27	28	20	21	22	23	24	25	26	17	18	19	20	21	22	23
25	26	27	28	29	30	31	29	30					27	28	29	30	31	24	25	26	27	28	29	30			
																			31	1	2	3	4	5	6		

= Schooldays/  
Weekends
  = School Holidays
  = Bank Holidays
  = Staff Training Days (No students)

Please note that Monday 1 September 2014 and Tuesday 2 September 2014 are Staff Training Days (no students). In addition, we have allocated three Staff Training Days out of the school days indicated and the equivalent of one school day in disaggregated twilight sessions.

<b>Autumn Term:</b>	Monday 1 September 2014 – Friday 19 December 2014 Half Term 27 October – 31 October	75 days
<b>Spring Term:</b>	Monday 5 January 2015 – Friday 27 March 2015 Half Term 16- 20 February	55 days
<b>Summer Term:</b>	Monday 13 April 2015 – Friday 17 July 2015 Half Term 25 May – 29 May, and May Bank Holiday, 4 May	64 days
<b>Staff training days</b>	Monday 1 September 2014 Tuesday 2 September 2014 Friday 10 October 2014 Monday 23 February 2015	194 days

# parentview

In October 2011 Ofsted launched Parent View, which is a facility for parents/carers to give their views about their child's school.

Parent View allows parents/carers to give their views about their child's school at any time of the year. It features 12 questions that cover a range of issues important to parents/carers, such as how well the school deals with bullying, the quality of teaching, whether the level of home learning given is appropriate and a final question of whether or not a parent would recommend the school. Once a small number of surveys are completed, the results for the school are visible in Parent View although individual

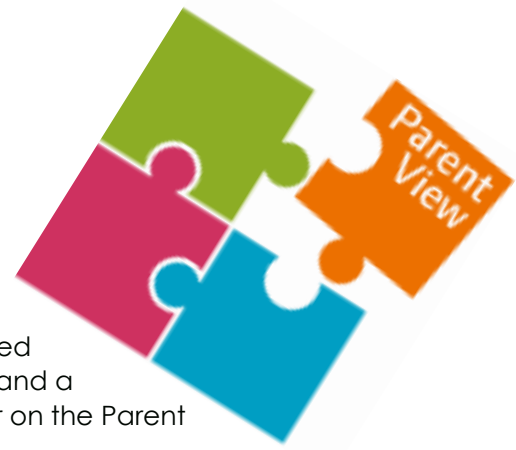
responses are not.

If you are a parent/carer you simply need your email address and a password to register on the Parent View website at:

<http://parentview.ofsted.gov.uk>.

Once your account has been activated it only takes a few minutes to rate your child's school against the 12 questions.

Thank you for taking the time to give feedback about Notley High School & Braintree Sixth Form.



## socialmedialinks

Below are the official social media sites for Notley High School & Braintree Sixth Form. Any other social media sites are not related to the school.

### Notley High School

#### Facebook:

- Notley High School & Braintree Sixth Form
- Geography at Notley High School & Braintree Sixth Form
- Ski Notley

#### Twitter:

- Notley High School & Braintree Sixth Form
- Notley High School PE Department
- Notley High School English Department
- Notley High School Philosophy, Ethics & Religion Department
- Geography at Notley High & Braintree Sixth Form
- Notley CPD
- Braintree Sixth Form

### Braintree Sixth Form

#### Facebook:

- Braintree Sixth Form Students
- Braintree Sixth Form Admissions
- Braintree Sixth Form Art Department
- Braintree Sixth Form Psychology Department
- Braintree Sixth Form Sociology Department
- Geography at Notley High School & Braintree Sixth Form

#### Twitter:

- Braintree Sixth Form Students
- Braintree Sixth Form Biology Department
- Braintree Sixth Form PE Department
- Braintree Arts Theatre
- Geography at Notley High School & Braintree Sixth Form

# schoolwebsite

This has lots of key information about many aspects of school life. We would encourage all parents and carers to use our website regularly to keep up-to-date with all that is happening at Notley High School & Braintree Sixth Form.

We also have school Facebook and Twitter feeds for keeping up-to-date with information. These can be easily reached from our homepage or via the appropriate apps on smartphones.

The screenshot shows the homepage of the Notley High School & Braintree Sixth Form website. At the top left is the school logo, followed by the school name. To the right are social media icons for Facebook, Twitter, RSS, and Email, along with a search bar and icons for Braintree Sixth Form and Braintree Arts Theatre. A navigation menu includes Home, News, Information, Curriculum, School Life, Teaching & Learning, CPD, Vacancies, and Contact. The main content area features a large banner for the 'Notley High School Drama Department presents GREASE' with a stylized car graphic and the text 'February 5th & 6th 7:30pm'. To the left of the banner is a sidebar with a list of events: Karate Competition, Safer Internet Day, E-Safety Workshop for Parents/Carers, Maths Leader Trip to Anglia Ruskin University, Book Review Competition, University of Essex Trip, and Notley Students Race for Life 2015. Below the banner is a 'Quick Links' section with links to Admissions Policy, Exam Results, Find the School, Handbook for Parents and Carers, Ofsted Report, Parent View, Pupil Premium, School Governance, Term Dates, and Welcome from the Head. There is also a 'Translate our site' section with a language dropdown menu. The 'Latest Newsletter' section shows the 'oncampus' newsletter cover for 'Ypres 2014'. The 'Latest Letters Home' section lists several letters for different year groups (Year 7, 9, 10, 11, 8) for the Spring Term. The 'Home Learning' section features a photo of two students holding a 'Week B' sign and icons for 'SMHW Show My Homework' and 'Home Learning Timetables'.



# photographyworkshop

## Working with the Professionals

On Wednesday 28 January 2015 ten of our photography enrichment students from Years 12 and 13 attended a workshop in Braintree Sixth Form with professional photographer Tina Korhonen.

Tina has run a workshop for us in the past and this time brought a professional model, Ria Fend with her, together with Tina's intern Swannee Vranckx.



Photos: Emily Norman (above)  
Alice Kellaway (right)  
Abbey Halfacre (top p27)



## Vintage “Pin-Up” Shoot

While Ria got changed into her first outfit, Tina discussed the work of a professional photographer with the students. She accompanied the discussion with examples of her work, showing both the original files and also how they were transformed into final magazine covers. Both Tina and Ria then talked to the students about how they got started in the business and Tina outlined the experience and qualifications she felt would be necessary to get your first proper assignment in today's highly competitive market.

After a quick break the students set up the studio equipment ready for the first photoshoot with Ria. Tina showed everyone how she would position and finesse the lighting for a vintage “pin-up” shoot on a classic white background. Once the lights were set she then showed the students how to work with a model, directing poses and creating a variety of looks. All the students were then given the opportunity to shoot a set of photographs and develop their own ideas with Ria under Tina's expert guidance.





Photos: Amy Lane (above)  
Emma Smith (above right)

### About Tina Korhonen

Tina is a freelance portrait, music and editorial photographer whose work has been published in national magazines such as Kerrang!, NME and Rolling Stone. Over her career she has shot some of the biggest names in the music business, including Florence and the Machine, Kiss, Dave Grohl, My Chemical Romance and Amy Winehouse.

For examples of Tina's work, visit her website [www.tina-k.co.uk](http://www.tina-k.co.uk)

## “Rock Chick” Shoot

In the afternoon we decamped to the theatre whilst Ria changed into her second outfit. Once we had the lights sorted and the smoke machine up and running, Tina showed the students how to shoot an edgier high contrast “rock” look.

Again all the students took their own shots and were now able to work with Ria and direct the shoot with a fair degree of confidence. Lauren was even brave enough to volunteer herself as a model, with encouragement and guidance from Ria and Tina!

The quality of the shots taken by the students was outstanding and the entire day was both fun and a real education for our enrichment students. At the end of the workshop nobody was under the impression that being a working photographer or model is an easy, stress free life!

Massive thanks go to Tina, Ria and Swanee for running such a successful workshop. The feedback from the students has been overwhelmingly positive and hopefully we will get the opportunity to run a similar workshop in the future.

*Mr Rowe - Media Support Manager*



Photos: Emma Smith (above)  
Adam Brown (left)



## Cold War Lecture

On Wednesday 3 December 2014, Group Captain Andrew Pennington gave a presentation on his experiences in the British Army and Air Force with a particular focus on his work in intelligence and espionage.

Captain Pennington worked in Northern Ireland, the Falkland Islands, the Gulf and in Germany, which included six years in Berlin and East Germany at the height of the Cold War. He spoke to an audience of Sixth Form students and KS4 students including many from the History department and they found the presentation both interesting and useful for their studies.



# BSF Model United Nations, General Assembly



Year 12 Model United Nations activities which have been running during TP1 concluded with our mock UN General Assembly (World Parliament) on Thursday 4 December 2014. Students had spent time researching and planning persuasive presentations for their proposed resolutions to global issues.

The country with the most committees represented was Brazil (also known as Ms Shephard's tutor group - 12O).

Joe Scotting on behalf of the Education Committee, proposed the resolution that the UN should donate money to support the education system in Brazil and reduce illiteracy. All delegates voted and this resolution was agreed. Other resolutions proposed by committees from Brazil included the Environment Committee asking for UN support to reduce the

loss of the Amazon Rainforest and the Political and Human Rights Committee highlighting the frequent killing of civilians by Brazilian police officers. The Economic and Financial Committee asked that the UN provide advisors and monitors to help Brazil prioritise expenditure away from the military and towards helping the ordinary people and reducing corruption.

Other countries represented were India, Russia and Finland. The Education Committee of Finland's resolution (presented by Bastian Stones) asked that the world share Finland's educational expertise; ensuring all teachers had Masters degrees, students started school at the age of 7 and had no testing at all until the age of 16. This proved popular with the student delegates – but was not quite so well received by the teaching staff.



## Any Questions?

On Friday 5 December 2014, a small number of students had the opportunity to attend the live broadcast of the BBC Radio 4 topical discussion programme *Any Questions?* held at Felsted School. The format of the programme was a panel discussion in response to questions from the audience, chaired by Jonathan Dimbleby, BBC broadcaster. The panel also consisted of Rachel Reeves (*Economist and Labour politician*), Mark Serwotka (*General Secretary*

*of the Public and Commercial Services Union*), Eric Pickles (*Conservative Party politician and Secretary of State for Communities and Local Government*) and Mark Littlewood (*Director General of the Institute of Economic Affairs*).

Students commented:

*"I found it very interesting; there were lots of relevant political points raised. It opened my eyes to both sides of the arguments rather than being biased. I was*

**BBC  
RADIO**



*impressed by how they all stuck to their ideas."* Emma Temple, Year 13

*"I really enjoyed it, it was interesting to see how the programme was organised, and there were some really good questions asked."* Jack Wade, Year 13



## The Giving Tree

BSF students took part in 'The Giving Tree', a charity that provides gifts for underprivileged children. Each tutor group purchased a gift for a nominated

child. Thank you to Year 12 student Amy Lane, for co-ordinating the support for this charity, and to all the students and staff who gave so generously.



*End of Year Joint Year Group Meeting*



## End of Year Joint Year Group Meeting

Ending 2014 with a celebration and reflection on the year's achievements including awards for attendance, contribution to the community, Head of Year award and most competitively the Tutor Quiz, seeing the prestigious trophy being passed to 13F, well done to Ms Newell's group!





## Study Skills Workshops

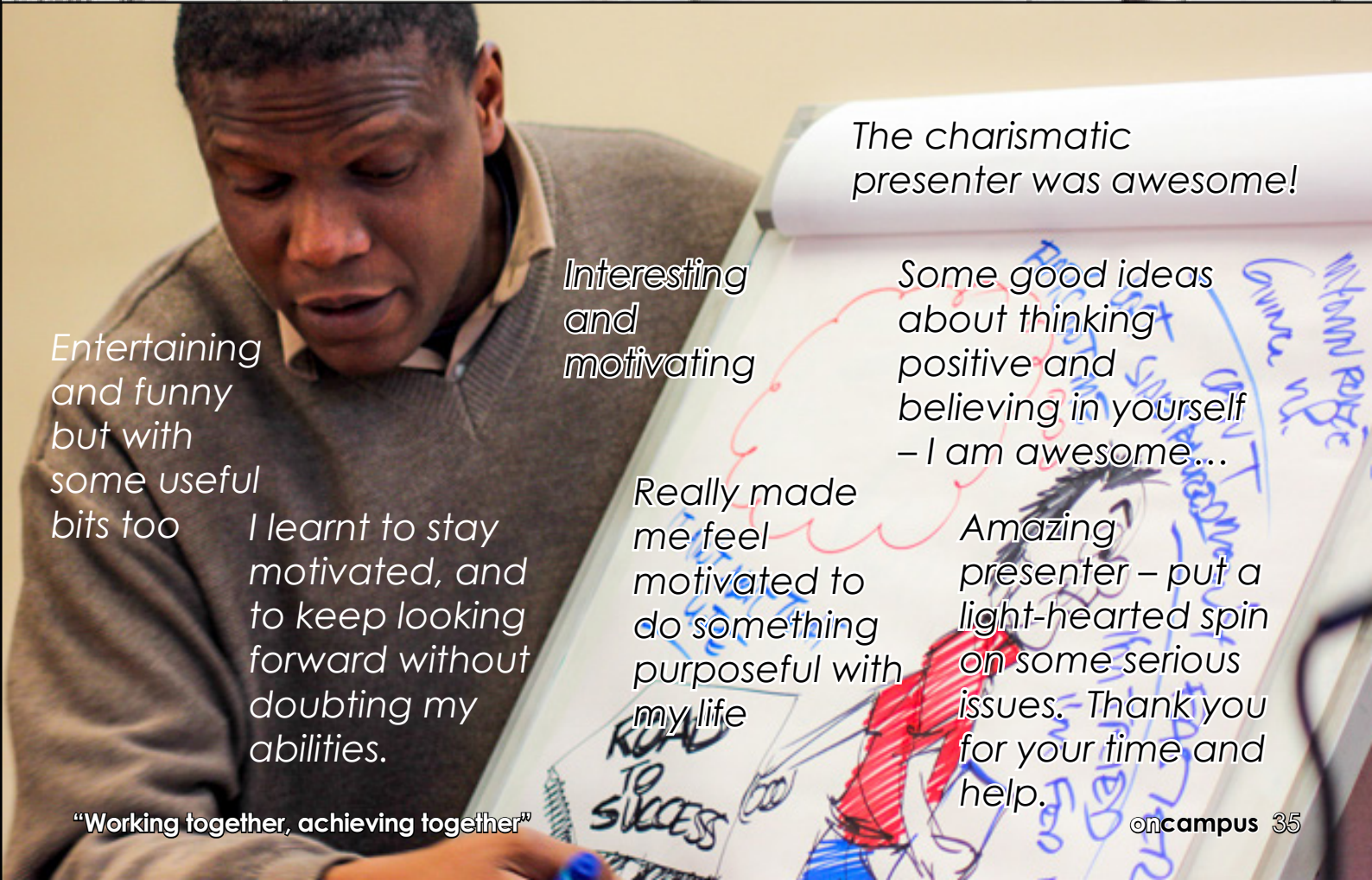
At the start of the new term BSF students enjoyed engaging and motivational presentations by Adebajji Alade from Learning Performance. Adebajji spoke about his own background growing up in Hackney and in Nigeria and his passion for art. His constant efforts, perseverance and daily practice eventually resulted in him developing some outstanding skills and making his living as a portrait artist.

See his story on <http://vimeo.com/50362507> - The Life of an Artist - Urban Sketcher, Adebajji Alade.

Adebajji's sketches even featured as part of the presentations.



"Passengers on a train" - sketchbook page



Entertaining and funny but with some useful bits too

I learnt to stay motivated, and to keep looking forward without doubting my abilities.

Interesting and motivating

Really made me feel motivated to do something purposeful with my life

The charismatic presenter was awesome!

Some good ideas about thinking positive and believing in yourself - I am awesome...

Amazing presenter - put a light-hearted spin on some serious issues. Thank you for your time and help.

"Working together, achieving together"

# braintreeartstheatre



**7 February**

**7.30pm**

**Tickets: £12, conc £10**

What were you thinking before you started reading this?

What if we told you that we already knew?

Join professional Mentalists Jack Blackbourn and Luke Ensey for an evening like no other. An insight into the workings of the human mind.

Interested, intrigued?

We told you we know what you're thinking.....

Welcome to Transparency

# braintreeartstheatre

Join us for our new monthly comedy night. Your evening comes jam packed with a host and 3 comedians.

Your Headliners will be:

February - Paddy Lenox

March - Mike Gunn

April - Andrew Bird

May - Carl Donnelly

June - Keith Farnan

July - Nathan Caton



# braintreearts theatre

Essex's Newest Community Theatre

- Live Music
- Drama
- Cabaret
- Comedy
- Dance
- Children's Theatre

**Available For Private Hire**

**Box Office 01376 556 354**

**Monday- Friday: 11am- 4pm**

**[www.braintreeartstheatre.com](http://www.braintreeartstheatre.com)**

**Notley Road, Braintree  
Essex CM7 1WY**

**Facebook:** [braintreeartstheatre](https://www.facebook.com/braintreeartstheatre)  
**Twitter:** @BATheatre

